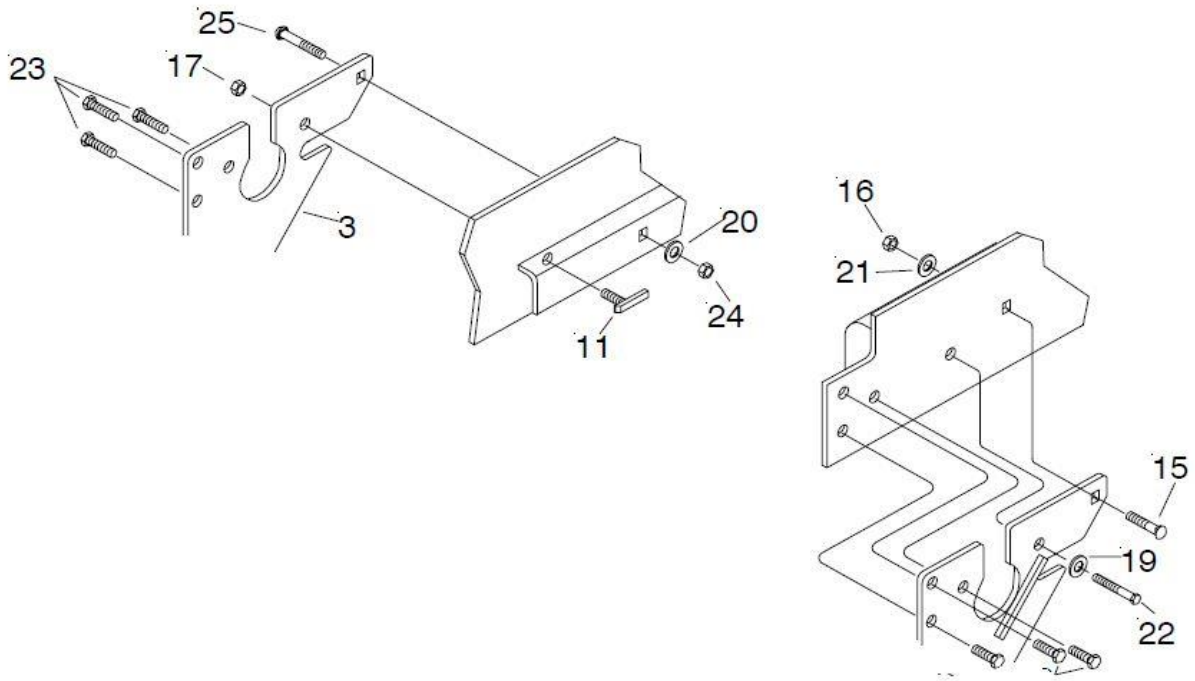
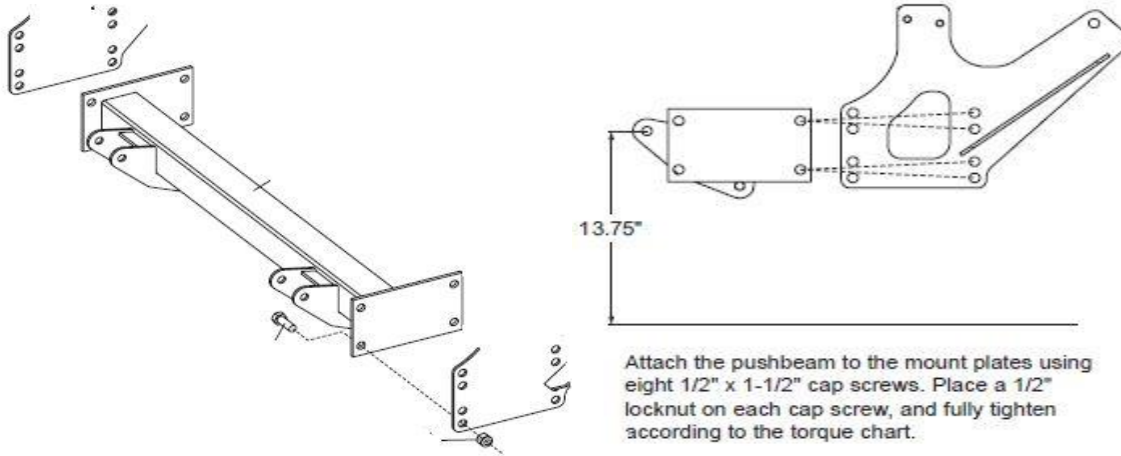


Cherokee Mount Instructions



Align the four holes in each side of the pushbeam with the holes in the mount plates. Choose the set of holes that will bring the pushbeam closest to the dimension shown below.



Attach the pushbeam to the mount plates using eight 1/2" x 1-1/2" cap screws. Place a 1/2" locknut on each cap screw, and fully tighten according to the torque chart.

INSTALLATION INSTRUCTIONS

NOTE: Installation of this mounting may or may not require cutting of the front air dam to allow mounting clearance. Also, vehicle skid plate will not be used.

- A. Remove bumper . Leave clip nuts in place. Retain bolts. They will not be reused.
- B. Remove air dam . Retain all hardware.
- C. Tow hooks cannot be used with the snow plow mounting. Remove tow hooks which are secured with "torx" head bolts. Retain tow hooks and all hardware, they will not be reused .
- D. Remove lower front steering gear box bolt . Retain bolt . It will not be reused .
- E. Position L.H. (driver's side) side plate (2) slotted hole over air dam brace and fender support brackets. Attach side plate to vehicle frame using 5/8-11 x 3-1/2" carriage bolt (15), flat washer (21), and locknut (16). Also attach side plate at steering gear box using 7/16-14x4" bolt (22) and lockwasher (19).
- F. Position R.H. (passenger side) side plate (3) slotted hole over air dam brace and fender support brackets. Temporarily attach side plate to front of vehicle frame using three M-10 x 15P x 40MM bolts (23).
- G. Using side plate (3) as a template, scribe hole "A" onto vehicle frame.
- H. Remove side plate (3) and drill a 1" diameter hole thru vehicle frame at scribe mark.
- I. Reattach side plate (3) using special bolt (11), locknut (17), button head torx bolt (25), flatwasher (20) and hexhead sleeve nut (24) .

Note: Bolt (25) and hexhead sleeve nut (24) are required on '86 and later vehicles to provide clearance for the alternator with certain engine options. On pre '86 vehicles, use a 5/8-11 x 3- 1/2" bolt (15), 5/8 flatwasher (21) and 5/8-11 ESNA locknut (16) and install at this location. (In order to facilitate tightening of the carriage bolts on the side plates, it may be necessary to temporarily loosen the steering gear box at this point .)

- J. Adjust bumper bracket width to accommodate side plates (2 & 3).
- K. Reattach bumper, side plates to front of vehicle frame using M10 x 1.5P x 40MM bolts (23) .

- L. M.** Clevis frame (1) should be pushed back as far as possible under the vehicle to remove slack in bolt holes. Tighten all nuts to proper torque as shown in torque chart, starting with the rear carriage bolt and working forward in the tightening process. If steering gear mounting bolts were loosened, retorque to 65 foot pounds.

You will need 3 1/2" x 1.5" bolts and lock nuts to mount the clevis to the side plates.

Adjust the height of the clevis to the picture above

Info on the bolts shown above

- #11 3/4" J bolt 14595**
- #15 5/8" x 3.5**
- #16 5/8" lock nut**
- #17 3/4" lock nut**
- #22 7/16" x 4" Grade 8 bolt**
- #23 Bumper bolts metric 10x 1.5 x 40mm**
- #24 Sleeve nut M14x2**
- #25 button head screw M14 x2"**