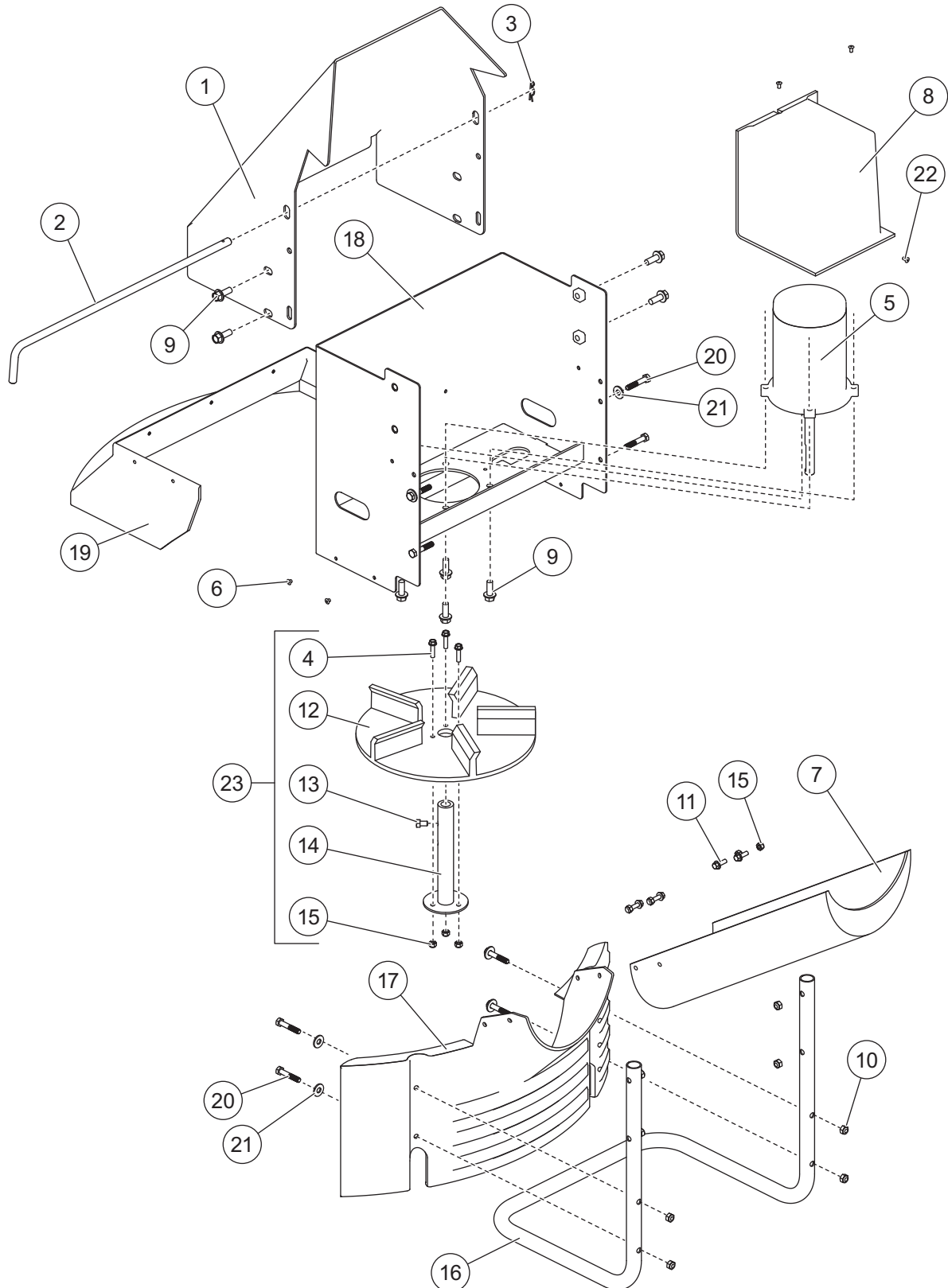


VX-4200 V-Maxx™ G2 HOPPER SPREADER

SPINNER DRIVE ASSEMBLY



VX-4200 V-Maxx™ G2 HOPPER SPREADER

SPINNER DRIVE ASSEMBLY

57254 Spinner Drive Assembly							
Item	Part	Qty	Description	Item	Part	Qty	Description
1	D6817	1	Spinner Shroud	12	D6823	1	5-Flite Urethane Spinner
2	D6563	1	1/2 x 20 Bent Pin	13	T15049	1	5/16-18 x 1/2 Hex Cap Screw
3	D4135	1	.093 x 2-3/8 Hairpin Cotter	14	D6824	1	Spinner Hub
4	D6854	3	1/4-20 x 1 Serrated Hex Washer-Head Cap Screw SS	15	T15016	7	1/4-20 Waxed Locknut SS
5	D6887	1	Direct Drive Spinner Motor	16	D6820	1	Spinner Guard Tube
6	D6130	7	3/16 Long Rivet	17	D6858	1	Material Deflector
7	D6885	1	Material Chute	18	D6867	1	Chute Extension, 10"
8	D6870	1	Spinner Motor Cover	19	D6859	1	Drive Extension Spinner Shield
9	D6452	8	3/8-16 x 1 Serrated Flange Bolt Type F	20	D6462	8	5/16-18 x 1-3/4 Hex Cap Screw
10	D6138	8	5/16-18 Locknut	21	D6165	6	5/16 Flat Washer
11	D6132	4	1/4-20 x 3/4 Serrated Hex Washer-Head Cap Screw SS	22	D6333	4	3/16 x .354 Black Bulbex Rivet
				23	99797	1	Spinner Hub Kit
				ns	83696	1	Spinner Motor Harness
Item 23				99797 Spinner Hub Kit			
4	D6854	3	1/4-20 x 1 Serrated Hex Washer-Head Cap Screw SS	13	T15049	1	5/16-18 x 1/2 Hex Cap Screw
12	D6823	1	5-Flite Urethane Spinner	14	D6824	1	Spinner Hub
				15	T15016	3	1/4-20 Waxed Locknut SS
ns = not shown				SS = Stainless Steel			